

Crave

Ceramic Tile



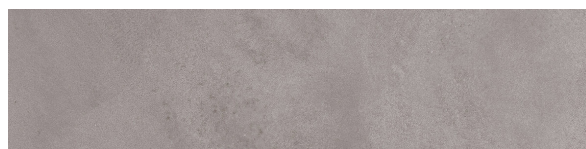
4 Colors | 1 Size | 5/16" Thickness

10" x 16"

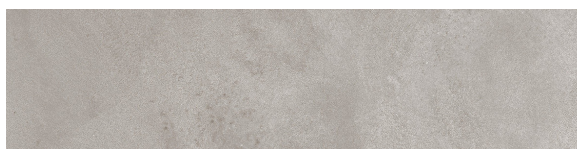
1534_0122 Featured: Crave Sand

Details	Test	Method	Results	Packing	Pcs/Box	SF/Box	Lbs/Box
	Water Absorption	ISO 10545-3	10% < E < 20%	10 x 16	15pc	16.15 SF	45.20 Lbs
	Bend Resistance	ISO 10545-4	≥ 15N/mm ²				
	Breaking Strength	ISO 10545-4	≥ 200N / ≥600N				
	Crazing Resistance	ISO 10545-11	N/A				
	Chemical Resistance	ISO 10545-13	Min. GB				
	Stain Resistance	ISO 10545-13	Min. Class 3				
	Anti-Slip	DIN 51130	N/A				

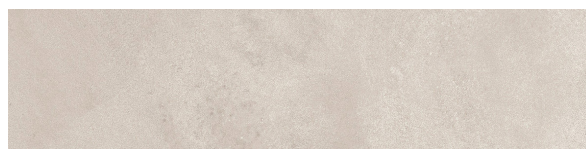
Color Options



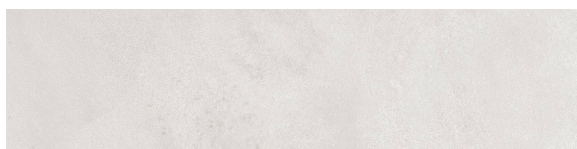
Dark Grey



Grey



Sand



Silver

Symbols

